



22 Woodside Lane
Leek



Estate Agents. Valuers. Auctioneers. Chartered Surveyors
Part of the Bagshaws Partnership

22 Woodside Lane

Leek
ST13 7AN

- * This outstanding pre-war semi-detached property is delightfully situated in a small quiet private cul-de-sac on the edge of town and from the upper floors enjoys extensive views to the front over town and towards The Roaches.
- * The property has been upgraded and improved to an immaculate standard by the current vendor and offers some excellent sized family accommodation that benefits from two reception rooms, gas fired central heating, sizeable rear garden and ample off street parking and detached garage.
- * The accommodation briefly comprises: Entrance Hall, Living Room, superb Kitchen with Sitting Room and Dining Area and W.c to the ground floor. Landing Area, Three Bedrooms and family Bathroom to the first floor.
- * A large driveway to the front providing off street parking for several vehicles and leading to a detached brick-built single garage / workshop with power, lighting and electric remote control door.
- * The property occupies a generous sized plot with gardens to both front and rear aspects with lawned areas, patio areas and display borders.
- * A superbly well appointed semi-detached family home of which internal inspection is strongly recommended.



Offers In The Region Of £375,000



3



1



2



D

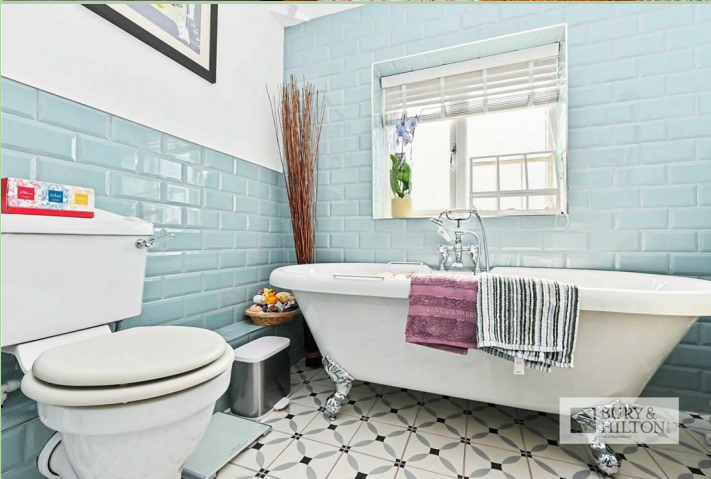
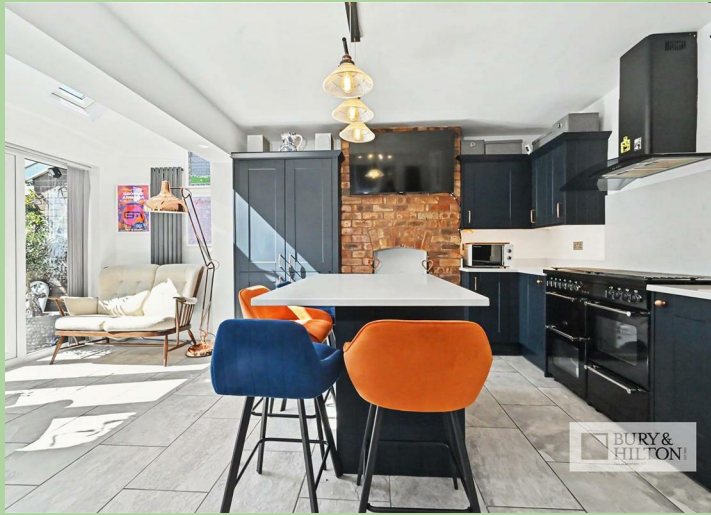


Leek - 01538 383344



leek@buryandhilton.co.uk





General Information

Entrance Hall

Parquet flooring. Stairs off. Understairs storage. Radiator.

Living Room

Bay window. Feature gas fire. Parquet flooring. Exposed beams. Radiator.

Kitchen / Diner

Range of fitted wall and base units. Stainless steel sink unit with drainer, rinsing bowl and mixer tap. Integrated fridge / freezer, dishwasher and washing machine. Breakfast island. Cooker point. extractor unit. Understairs storage. Feature boiling water tap. Double doors to rear. Tiled floor. Radiator x 2. Sky light x 2.

W.c

W.c. Wash basin. Radiator. Tiled floor.

First Floor

Landing Area

Access to:

Bedroom

Radiator. Bay window.

Bedroom

Radiator.

Bedroom

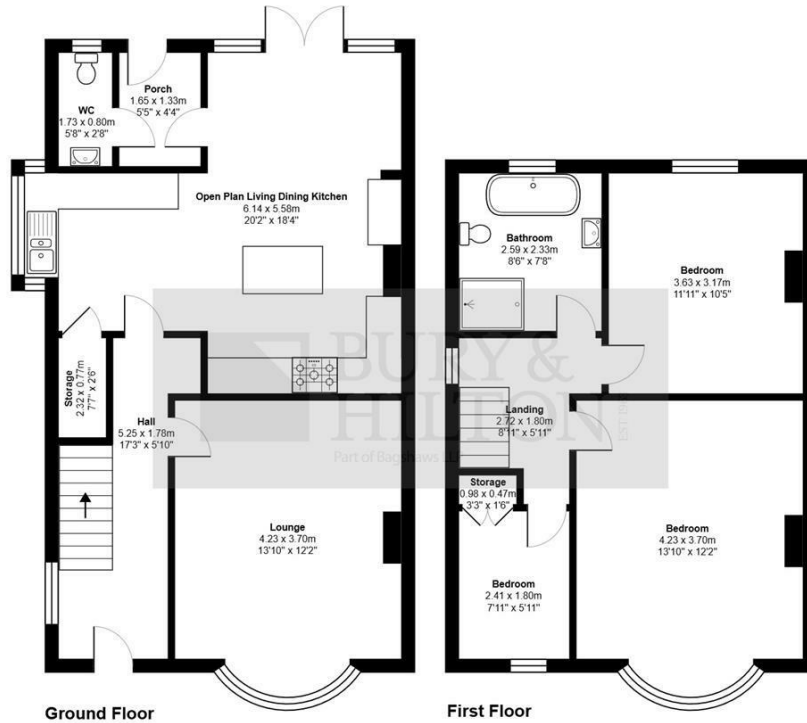
Radiator. Storage cupboard housing central heating boiler.

Bathroom

Roll top bath with feeder shower. Large shower cubicle. W.c. Wash basin with storage unit below. Tiled floor.

Outside

A large driveway to the front providing off street parking for several vehicles and leading to a detached brick-built single garage / workshop with power, lighting and electric remote control door. The property occupies a generous sized plot with gardens to both front and rear aspects with lawned areas, patio areas and display borders.



All measurements are approximate and for display purposes only

Agents Notes

Bury & Hilton have made every reasonable effort to ensure these details offer an accurate and fair description of the property. The particulars are produced in good faith, for guidance only and do not constitute or form an offer or part of the contract for sale. Bury & Hilton and their employees are not authorised to give any warranties or representations in relation to the sale and give notice that all plans, measurements, distances, areas and any other details referred to are approximate and based on information available at the time of printing.



6 Market Street, Leek, Staffordshire, ST13 6HZ

T: 01538 383344

E: leek@buryandhilton.co.uk

www.buryandhilton.co.uk

Part of the Bagshaws Partnership



Offices in:

Ashbourne	01335 342201
Bakewell	01629 812777
Buxton	01298 27524
Leek	01538 383344
Uttoxeter	01889 562811